

# zanotta:

COMPOSIZIONE: 54 % LANA 23% COTONE 11%POLIAMMIDE 11%ALPACA 1%ELASTAN  
COMPOSITION: 54% WOOL 23% COTTON 11% NYLON 11% ALPACA 1% ELASTANE  
COMPOSITION: 54% LAINE 23% COTON 11% POLYAMIDE 11% ALPAGA 1% ELASTHANNE  
ZUSAMMENSTELLUNG: 54% WOLLE 23% BAUMWOLLE 11% POLYAMID 11% ALPAKA 1% ELASTHAN  
COMPOSICION: 54% LANA 23% ALGODON 11% POLIAMIDA 11% ALPACA 1%ELASTANO

# terso cat. 30



HEIGHT: 140 cm

LIGHT RESISTANCE: 4/5

ABRASION: 50.000

WEIGHT: 693 g/ml

SHRINKAGE: +/- 2 %

PILING: 4



32901



32940



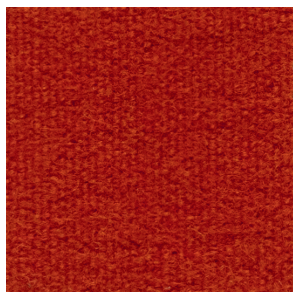
32917



32935



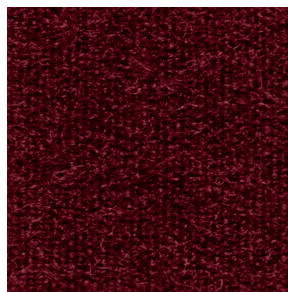
32930



32934



32926



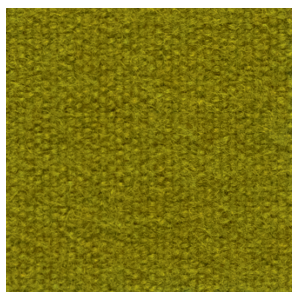
32920



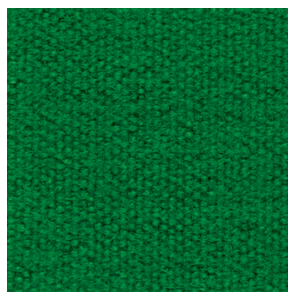
32916



32913



32945



32946



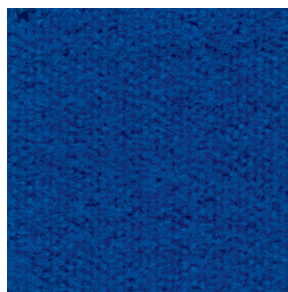
32948



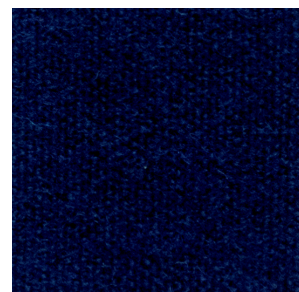
32961



32950



332956



32957

TEL. +39.0362.4981  
WWW.ZANOTTA.IT

ZANOTTA SPA VIA VITTORIO VENETO 57  
20834 NOVA MILANESE MB - ITALIA